

**MAIN FEATURES**

**App connectivity & user management**  
Yes

**Protection**  
Burglary resistance – built to a certified EN 14450 construction – S1 level, Faraday; SS 304 Domestic Safe Sold Secure Silver level

**Country of origin**  
Made in Germany

**Installation**  
Easy mounting into 60cm cabinets

**Operation**  
Simple, fast yet safe access by means of fingerprint sensor

**Colour**  
Standard colour RAL 9010 pure white with a smooth finish

**Standard inlay**  
Grey felt mat

**ELECTRONICAL COMPONENTS & CONNECTIONS**

**Power lead to mains**  
230V/ 12V, 1.8m cord length, connected at bottom rear of case

**Power plug**  
EU or UK

**Connector between case and drawer**  
to be connected using screw driver after securing case and sliding drawer into it

**Fingerprint sensor**  
Capacitive sensor; IPx7; Verification time: 0.4 seconds

**In the event of a power cut**  
9v battery can be connected for short time use at bottom of case by user, data is not erased

**Reset function**  
Press the red button on the casing under the drawer

**SECURITY FEATURES**

**Safety standards**  
built to a EN 14450 – S1 standard; Sold Secure Silver level

**Locks**  
Prime locks certified to ECB-S Class B and VDS Class 2

**Faraday protection**  
protection against data theft at a distance > 10cm

**Code and key encryption**  
storage in a safe hardware unit (HSM)

**Software & fingerprint sensor testing**  
Orange Cyberdefence in Malmö (Sweden)

**Fire protection**  
No

**APP FUNCTIONS & FEATURES**

**Connectivity**  
Wi-Fi and Bluetooth

**Users per safe**  
1 app user per safe, up to 20 fingerprint users per safe

**Alternative user interface**  
Yes

**User permission rights storage**  
Yes

**Users administration & monitoring**  
Yes

**Factory default settings**  
Free opening by any fingerprint

**Activity log**  
2 weeks activity log

**PHYSICAL PROPERTIES**

**Overall packaging dimensions (WxDxH)**  
600 x 550 x 200 mm

**Case dimensions (WxDxH)**  
555 x 492 x 124 mm

**Wooden front dimensions (WxDxH)**  
560 x 10 x 134 mm

**Support flanges dimensions (WxDxH)**  
380 x 2 x 130 mm

**Drawer inner dimensions (WxDxH)**  
515 x 392 x 80 mm

**Inner volume**  
16 litres

**Case weight**  
26 kg

**Drawer weight**  
13 kg

**Case material**  
4mm housing with 4mm stainless steel front; reinforced with manganese plates

**MECHANICAL PROPERTIES & FUNCTIONALITY**

**Soft close function**  
Yes (Blumotion)

**Automatic lock when closing**  
Yes

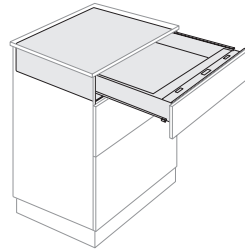
**Durability testing**  
over 25.000 life cycles (opening & closing)

**Time to open**  
under 4 seconds

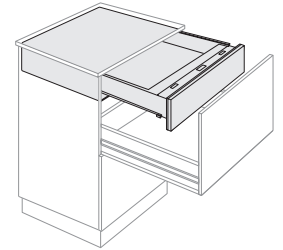
**Runner System**  
Yes (Blum Movento)

**INSTALLATION OPTIONS**

**Single drawer**



**Drawer-in-drawer**

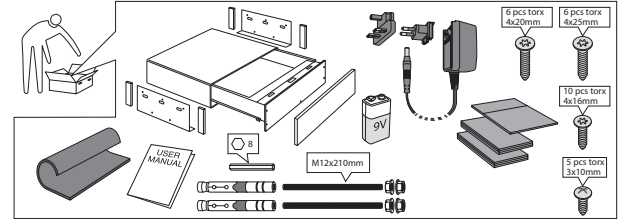


The mounted wooden front is supposed to be flush-fitted with the cabinet. We do not recommend to install The EverydaySafe in direct or close access to a source of heat or water.

**INSTALLATION STEPS**

**Unpacking**

without turning box upside down, extract from the box, cutting the corners if needed

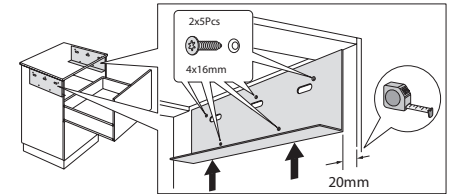
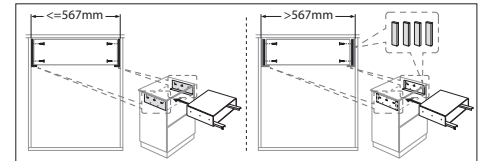


**Preparing**

place appliance on flat surface and extract drawer from case (2 people needed)

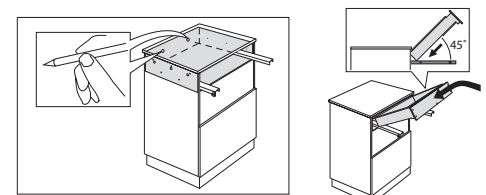
**Fixing of case to cabinet side panels**

via x2 support flanges screwed onto the side panels (20 mm from edge for drawer-in-drawer)



**Drilling and anchoring to wall**

via x2 12mm adjustable fixing bolts, once the case has been pushed onto the supports



**Connecting**

